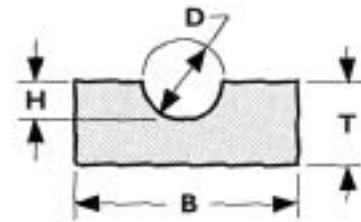


Belt Guide

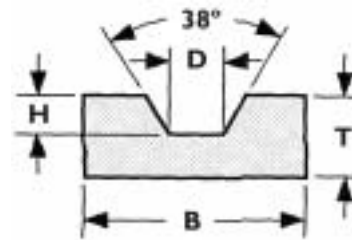
Round Belt Guide

P/N	Belt	T	B	D	H
RBG03	3/16"	.38"	.75"	.25"	.13"
RBG04	1/4"	.38"	.75"	.31"	.16"
RBG05	5/16"	.50"	.75"	.38"	.19"
RBG06	3/8"	.63"	1.00"	.44"	.22"
RBG08	1/2"	.75"	1.25"	.56"	.28"
RBG10	5/8"	1.00"	1.25"	.69"	.35"
RBG12	3/4"	1.00"	1.50"	.81"	.41"



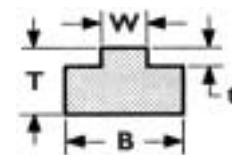
V-Belt Guide

P/N	Belt	T	B	D	H
VBG25	M	.38"	.75"	.25"	.13"
VBG28	Z	.38"	.75"	.28"	.19"
VBG38	A	.50"	.75"	.38"	.25"
VBG47	Belt	.63"	1.25"	.47"	.31"
VBG53	-	.75"	1.25"	.53"	.38"
VBG56	C	.75"	1.38"	.56"	.44"
VBG66	-	1.00"	1.50"	.66"	.50"



Roller Chain Guide-Type T

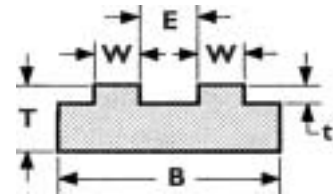
P/N	ANSI chain #	B	T	W	t
TCG025	25	.78"	.59"	.10"	.09"
TCG035	35	.78"	.59"	.17"	.10"
TCG040	40	.78"	.59"	.29"	.10"
TCG050	50	.78"	.59"	.35"	.12"
TCG060	60	1.10"	.59"	.47"	.15"
TCG080	80	1.34"	.71"	.60"	.18"
TCG100	100	1.61"	1.00"	.72"	.26"
TCG120	120	2.01"	1.25"	.96"	.31"
TCG140	140	2.17"	1.50"	.96"	.36"
TCG160	160	2.61"	1.50"	1.21"	.42"
TCG180	180	2.88"	1.50"	1.35"	.47"



Belt Guide

Roller Chain Guide-Type TD

P/N	ANSI chain #	B	T	W	t	E
TDCG025-2	25-2	.78"	.59"	.10"	.09"	.15"
TDCG035-2	35-2	.78"	.59"	.17"	.10"	.23"
TDCG040-2	40-2	.85"	.59"	.29"	.10"	.27"
TDCG050-2	50-2	1.07"	.59"	.35"	.12"	.37"
TDCG060-2	60-2	1.34"	.59"	.47"	.15"	.40"
TDCG080-2	80-2	1.75"	.71"	.60"	.18"	.55"



Roller Chain Guide-Type U

P/N	ANSI chain #	B	T	T2	T3	D2	H
UCG25	25	.78"	.59"	.09"	.13"	.12"	.27"
UCG35	35	.78"	.59"	.15"	.22"	.16"	.39"
UCG40	40/2040	.78"	.59"	.18"	.26"	.21"	.51"
UCG50	50/2050	1.10"	.71"	.24"	.35"	.28"	.67"
UCG60	60/2060	1.10"	.71"	.28"	.41"	.32"	.78"
UCG80	80/2080	1.50"	.79"	.30"	.47"	.43"	1.04"

