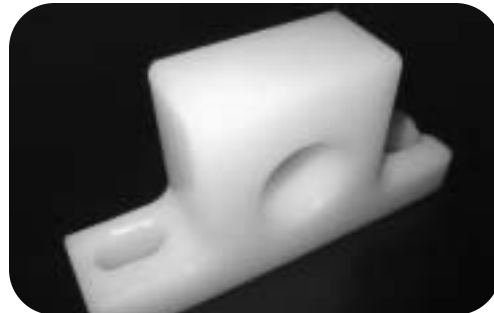


Solid Bearings

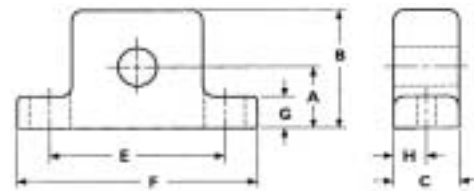
Pillow Block Bearings

P/N	Nom. Bore	A	B	C	E	F	G	H	J	K	Bolt Size
UPB008	1/2"	1-3/16"	2-3/16"	1-1/2"	3-3/8"	4-3/4"	5/8"	3/4"	7/16"	7/8"	3/8"
UPB010	5/8"	1-3/16"	2-3/16"	1-1/2"	3-3/8"	4-3/4"	5/8"	3/4"	7/16"	7/8"	3/8"
UPB012	3/4"	1-5/16"	2-1/2"	1-1/2"	3-3/4"	5-1/4"	5/8"	3/4"	7/16"	15/16"	3/8"
UPB014	7/8"	1-7/16"	2-3/4"	1-1/2"	4"	5-1/2"	3/4"	3/4"	7/16"	15/16"	3/8"
UPB015	15/16"	1-7/16"	2-3/4"	1-1/2"	4"	5-1/2"	3/4"	3/4"	7/16"	15/16"	3/8"
UPB016	1"	1-7/16"	2-3/4"	1-1/2"	4"	5-1/2"	3/4"	3/4"	7/16"	15/16"	3/8"
UPB017	1-1/16"	1-11/16"	3-1/4"	1-1/2"	4-3/4"	6-1/4"	7/8"	3/4"	9/16"	1-1/16"	1/2"
UPB018	1-1/8"	1-11/16"	3-1/4"	1-1/2"	4-3/4"	6-1/4"	7/8"	3/4"	9/16"	1-1/16"	1/2"
UPB019	1-3/16"	1-11/16"	3-1/4"	1-1/2"	4-3/4"	6-1/4"	7/8"	3/4"	9/16"	1-1/16"	1/2"
UPB020	1-1/4"	1-7/8"	3-5/8"	1-3/4"	5"	6-1/2"	7/8"	7/8"	9/16"	1-1/16"	1/2"
UPB023	1-7/16"	1-7/8"	3-5/8"	1-3/4"	6-1/5"	5"	7/8"	7/8"	9/16"	1-1/16"	1/2"
UPB024	1-1/2"	2"	4"	1-3/4"	5-3/8"	7"	7/8"	1"	9/16"	1-1/16"	1/2"
UPB028	1-3/4"	2-1/8"	4-1/2"	2"	5-3/4"	7-1/2"	7/8"	1"	9/16"	1-1/16"	1/2"
UPB031	1-15/16"	2-1/4"	4-1/2"	2"	6-1/4"	8"	7/8"	1"	11/16"	1-3/16"	5/8"



NOTE!
Material: UHMW-PE Nat.

Solid UHMW-PE mounted bearings offer a low cost solution to caustic environments that would normally attack their steel counter parts. UHMW-PE does not corrode or contaminate environments and they do not need to be lubricated.



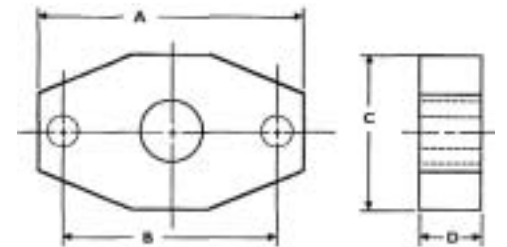
Solid Bearings

2-Bolt Bearings

P/N	Nom. Bore	A	B	C	D	Max. Speed	Max. load (lbs.)
2FL012	3/4"	4-7/16"	3-9/16"	2-1/2"	1-1/2"	250	900
2FL016	1"	4-15/16"	3-7/8"	2-3/4"	1-1/2"	195	1220
2FL019	1-3/16"	5-5/8"	4-5/8"	3-1/4"	1-1/2"	160	1420
2FL020	1-1/4"	6-1/8"	5-1/8"	3-5/8"	1-3/4"	150	1750
2FL023	1-7/16"	6-1/8"	5-1/8"	3-5/8"	1-3/4"	135	2025
2FL024	1-1/2"	6-13/16"	5-5/8"	4"	2"	125	2125



NOTE!
Material: UHMW-PE Nat.



4-Bolt Bearings

P/N	Nom. Bore	A	B	C	D	Max. Speed	Max. load (lbs.)
4FL012	3/4"	3-3/8"	1-11/16"	2-1/2"	1-1/4"	250	900
4FL016	1"	3-3/4"	1-7/8"	2-3/4"	1-1/4"	190	1200
4FL019	1-3/16"	4-1/4"	2-1/8"	3-1/4"	1-1/2"	160	1420
4FL020	1-1/4"	4-1/4"	2-1/8"	3-5/8"	1-1/2"	150	1750
4FL023	1-7/16"	4-3/4"	2-3/8"	3-5/8"	1-1/2"	130	2000
4FL024	1-1/2"	5-1/8"	2-9/16"	4"	1-3/4"	120	2100
4FL031	1-15/16"	5-1/2"	2-3/4"	4-3/8"	1-3/4"	80	2150



NOTE!
Material: UHMW-PE Nat.

